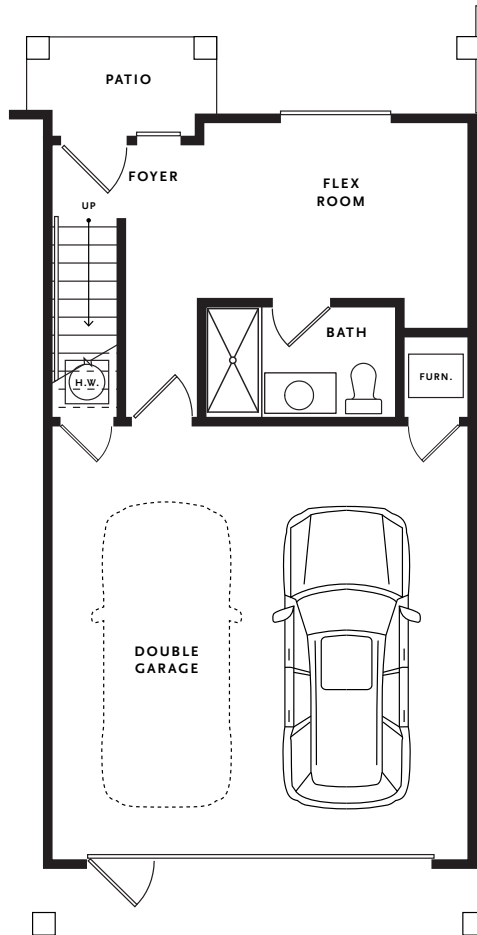


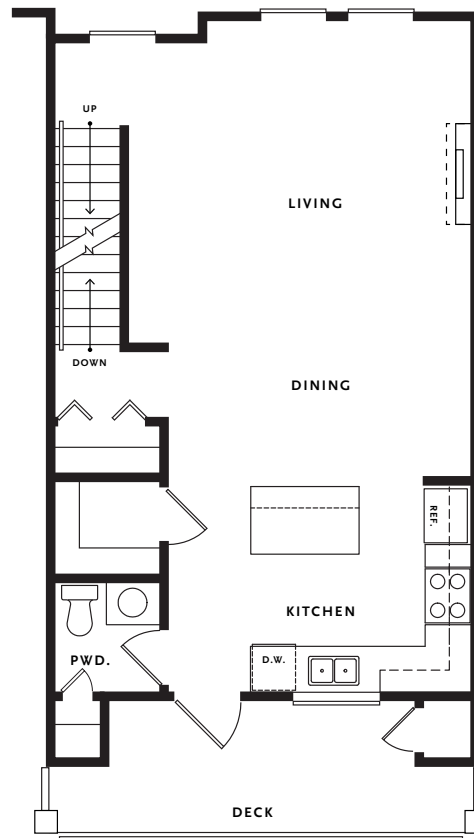
A

Three Bedroom + Flex 1,643 SF

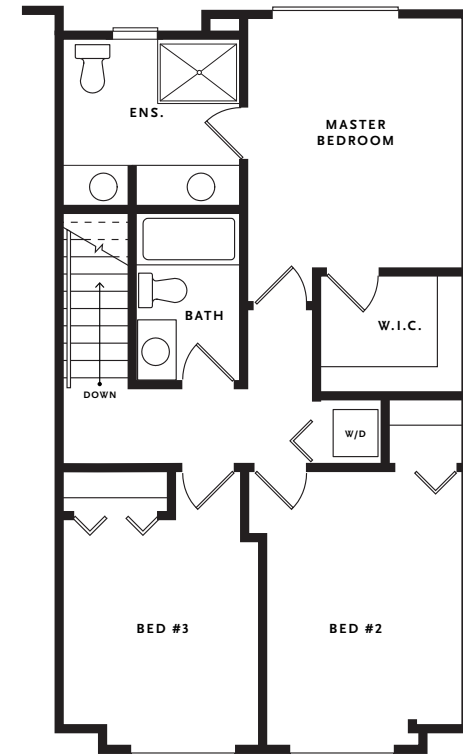
SOUTH VILLAGE
MODERN FARMHOUSE REDEFINED



BASEMENT



MAIN



UPPER

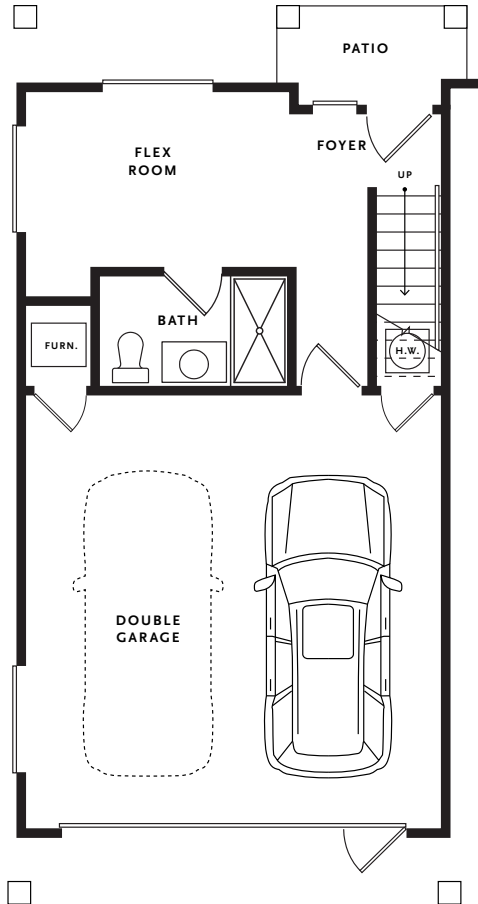
info@liveatsouthvillage.com
liveatsouthvillage.com

604-910-9919
16467 23A Ave, Surrey, BC

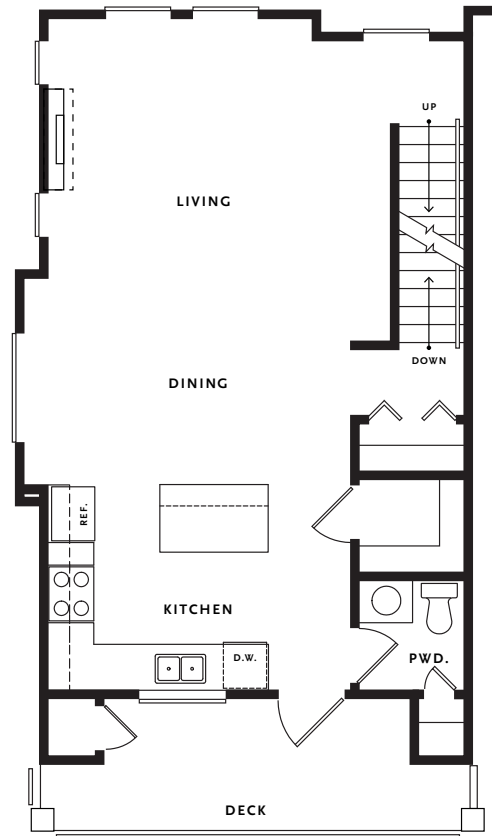
The developer reserves the right to make minor modifications or substitutions to building design, specifications or floor plans if necessary. All sizes and dimensions are approximate and based on architectural measurements. Reverse plans occur throughout the development. Renderings are an artist's conception and are intended for reference only. Deck and patio sizes may vary. Please refer to disclosure statement for specific offering details. E.&O.E.

A1 Three Bedroom + Flex

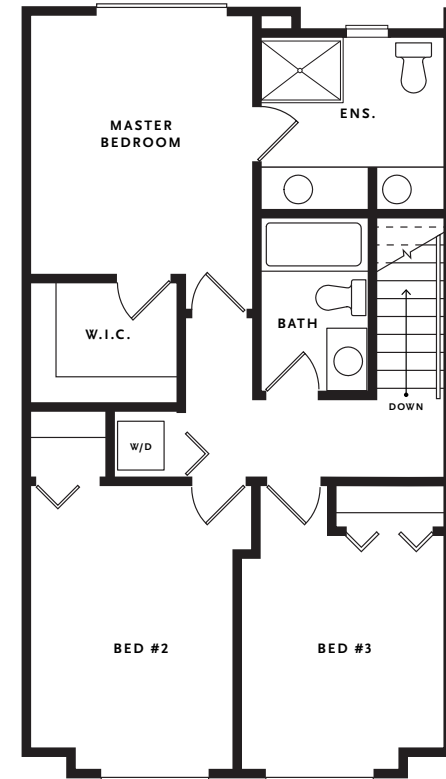
1,668 SF



BASEMENT



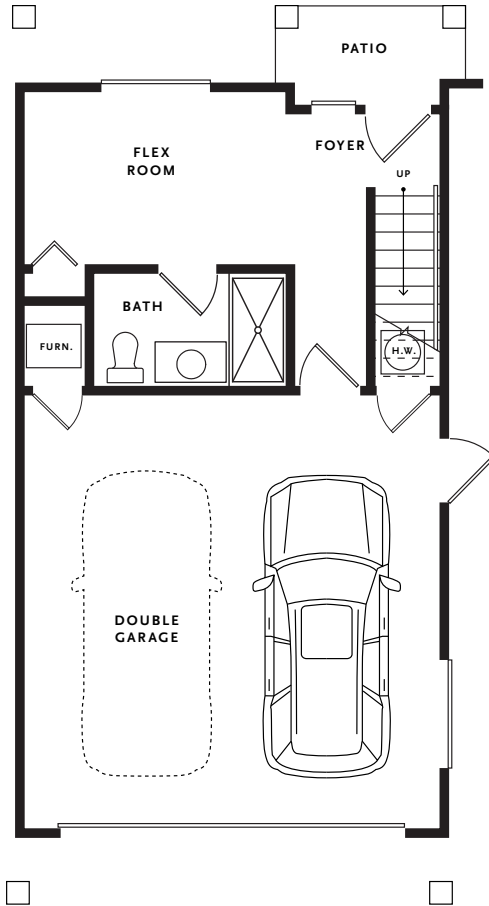
MAIN



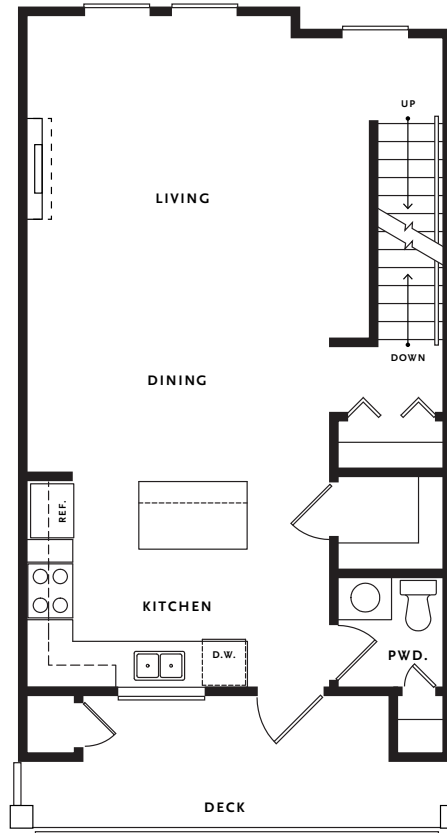
UPPER

A2 Three Bedroom + Flex 1,657 SF

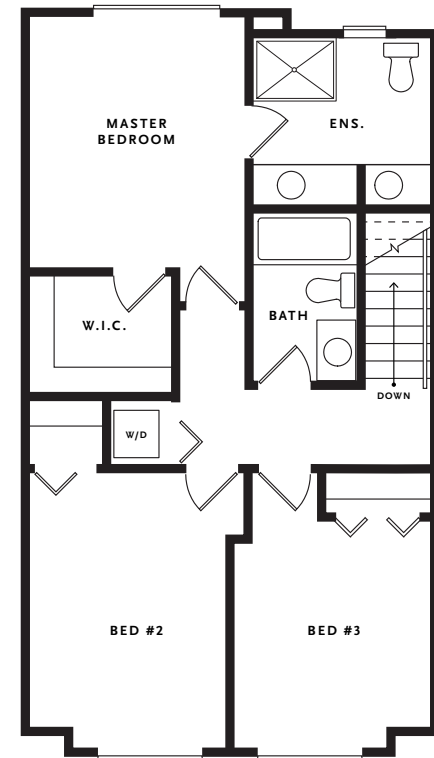
SOUTH VILLAGE
MODERN FARMHOUSE REDEFINED



BASEMENT



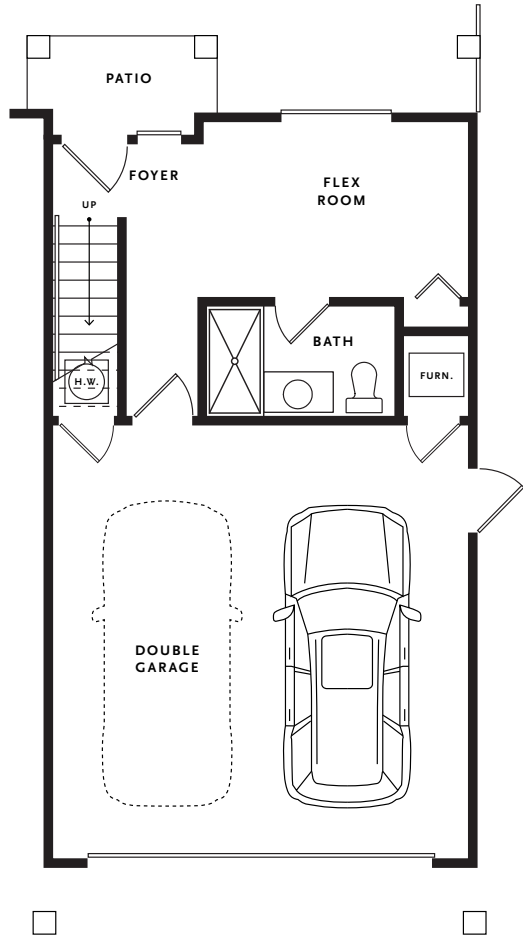
MAIN



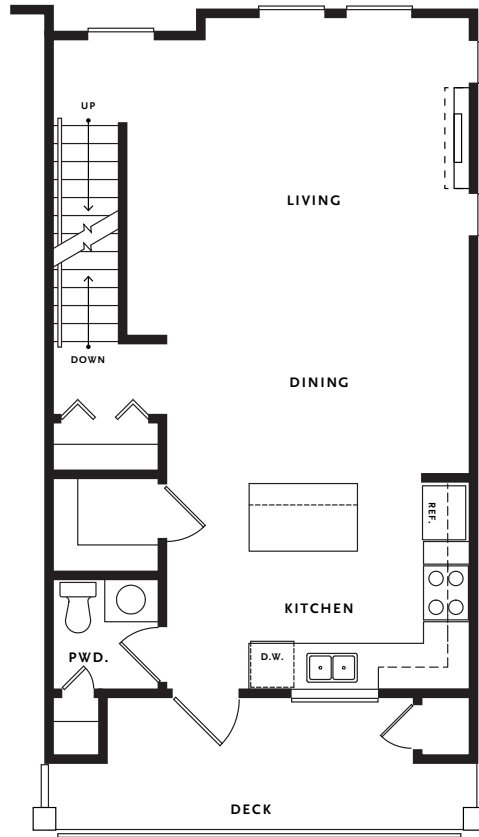
UPPER

A3 Three Bedroom + Flex 1,657 SF

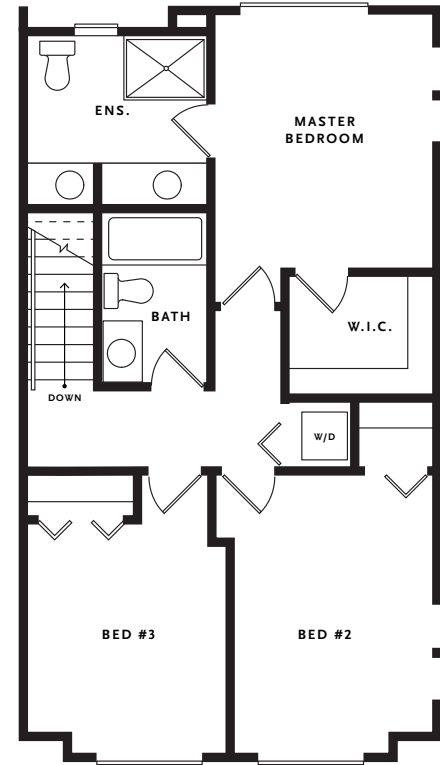
SOUTH VILLAGE
MODERN FARMHOUSE REDEFINED



BASEMENT



MAIN



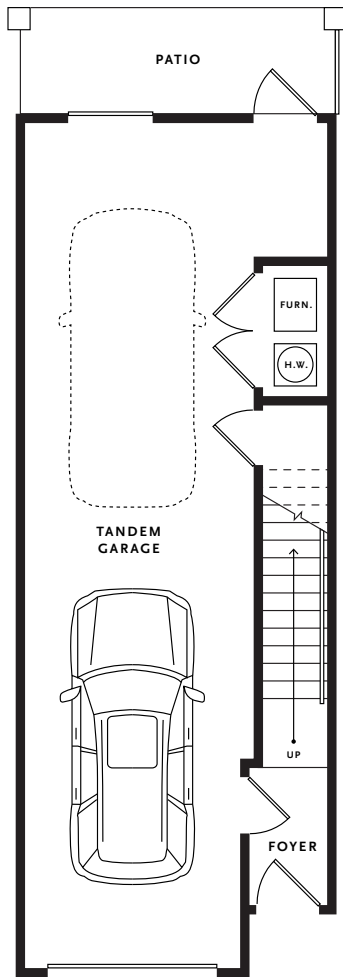
UPPER

B

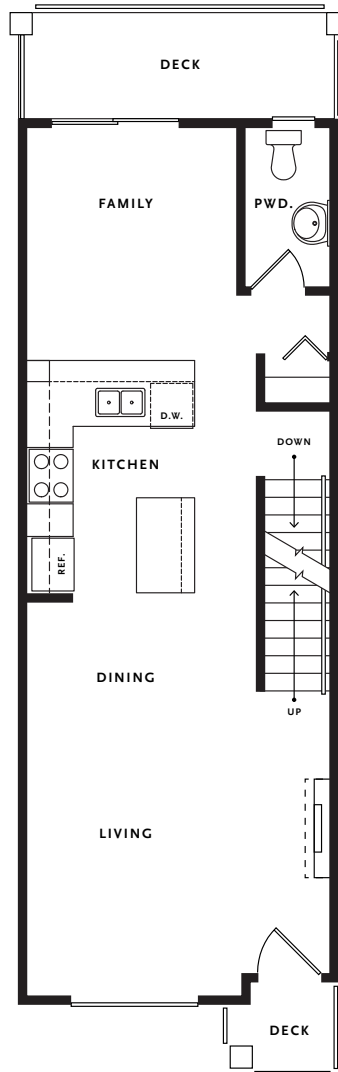
Three Bedroom 1,378 SF

SOUTH VILLAGE
MODERN FARMHOUSE REDEFINED

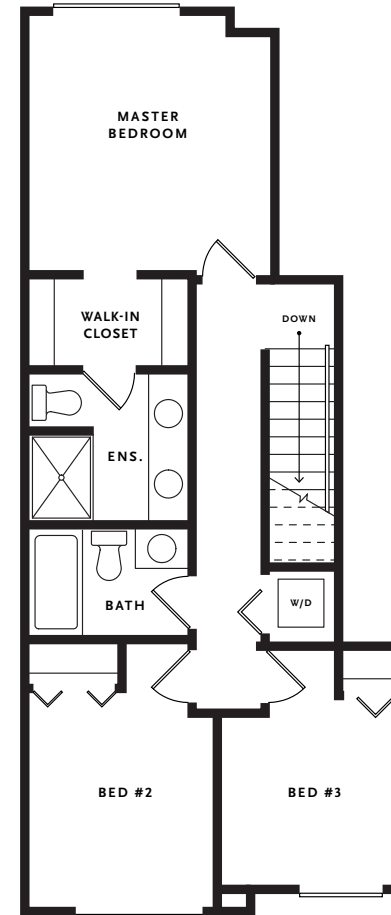
RED
KEY
MARKETING
FRONTLINE
REALTY



BASEMENT



MAIN



UPPER

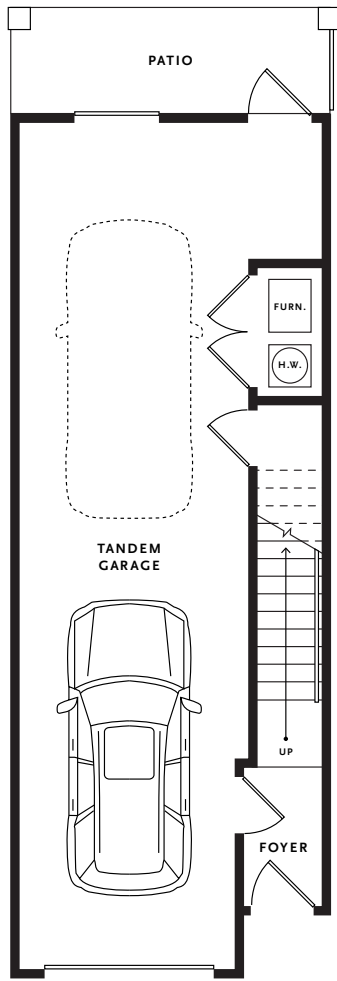
info@liveatsouthvillage.com
liveatsouthvillage.com

604-910-9919
16467 23A Ave, Surrey, BC

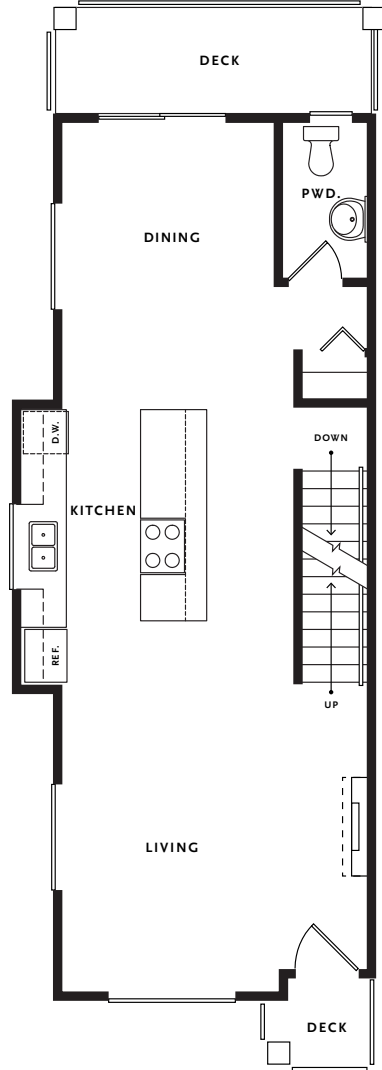
The developer reserves the right to make minor modifications or substitutions to building design, specifications or floor plans if necessary. All sizes and dimensions are approximate and based on architectural measurements. Reverse plans occur throughout the development. Renderings are an artist's conception and are intended for reference only. Deck and patio sizes may vary. Please refer to disclosure statement for specific offering details. E.&O.E.

B1 Three Bedroom

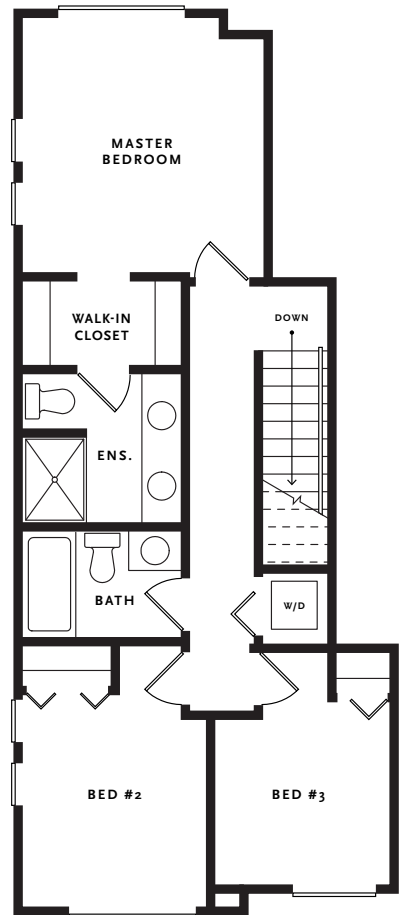
1,418 SF



BASEMENT



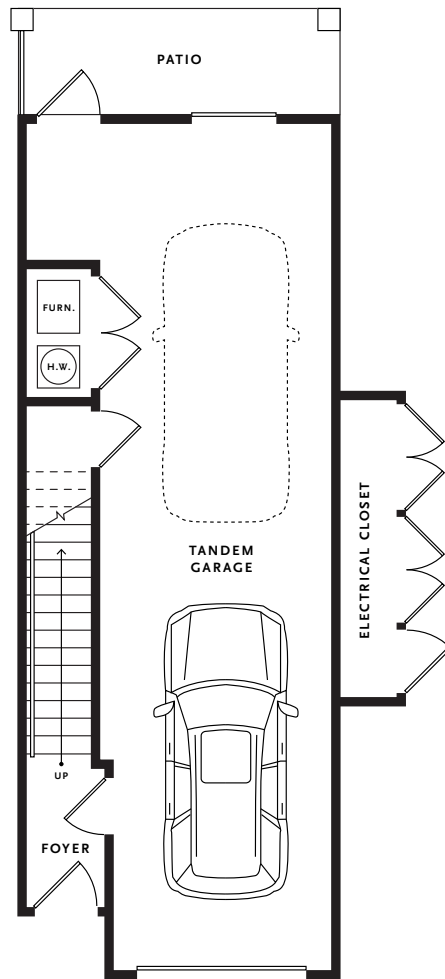
MAIN



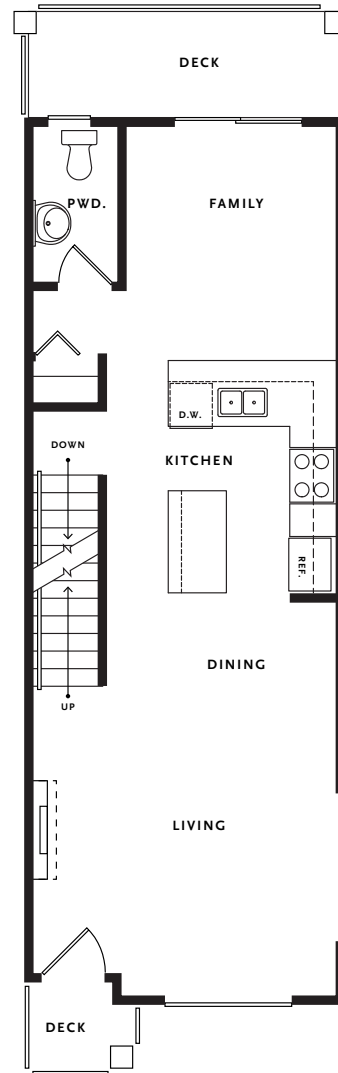
UPPER

B2 Three Bedroom

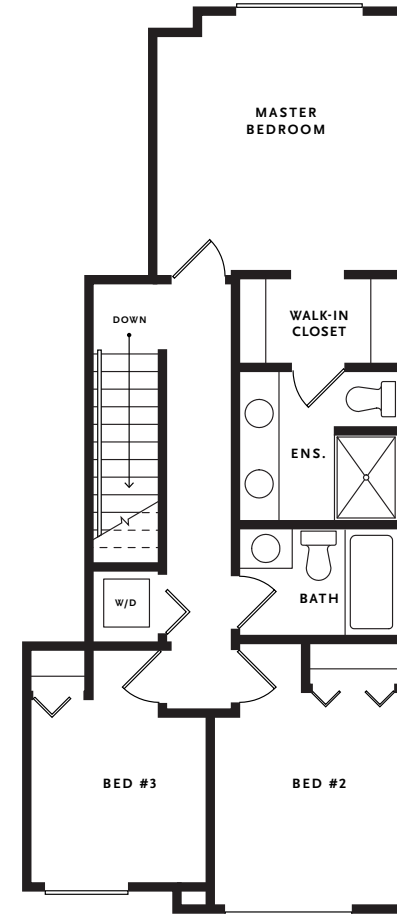
1,390 SF



BASEMENT



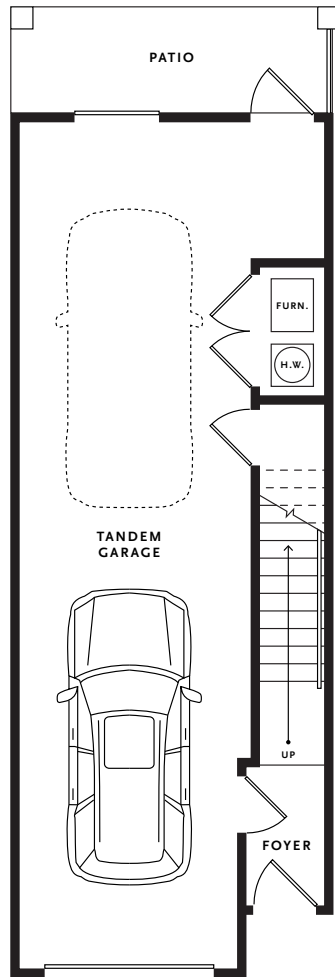
MAIN



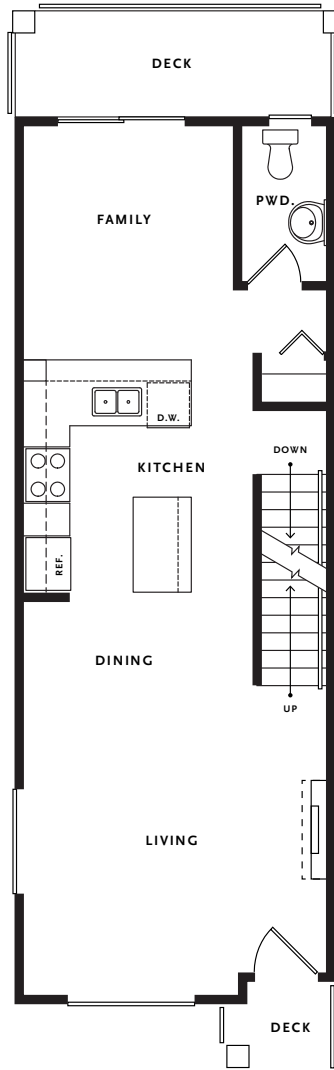
UPPER

B3 Three Bedroom

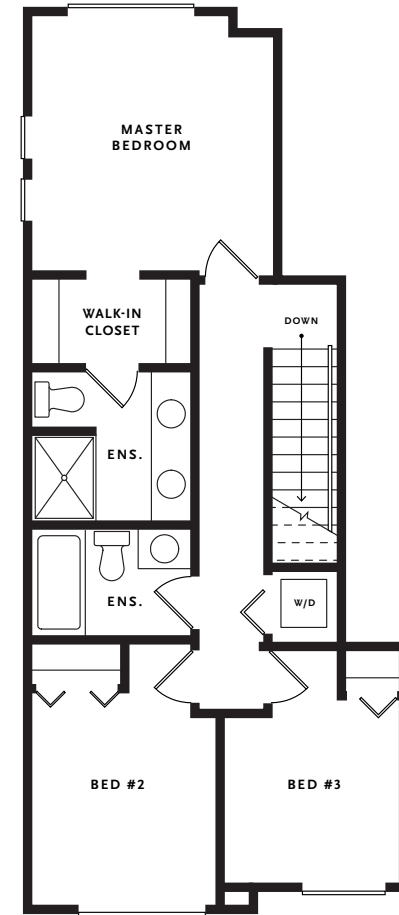
1,390 SF



BASEMENT



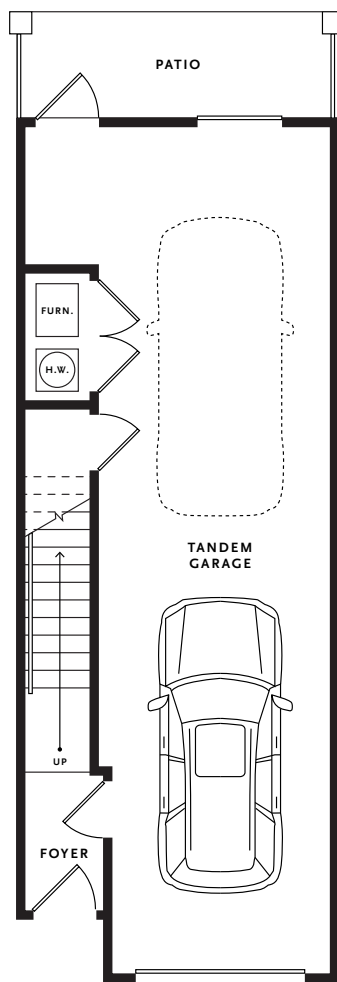
MAIN



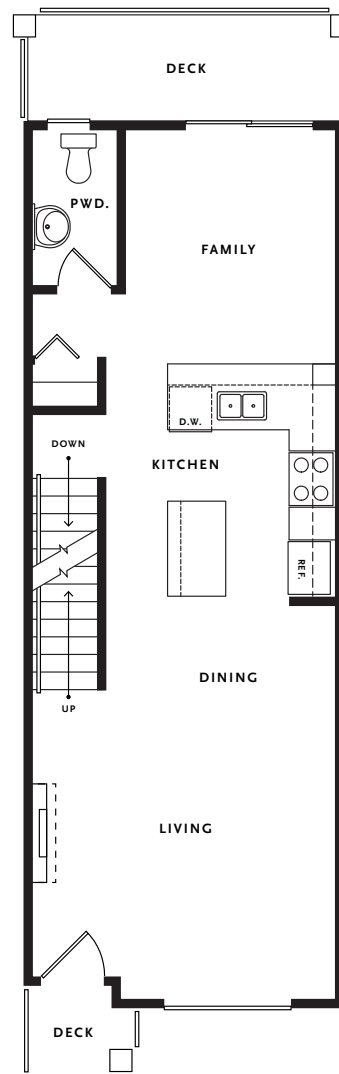
UPPER

C Three Bedroom

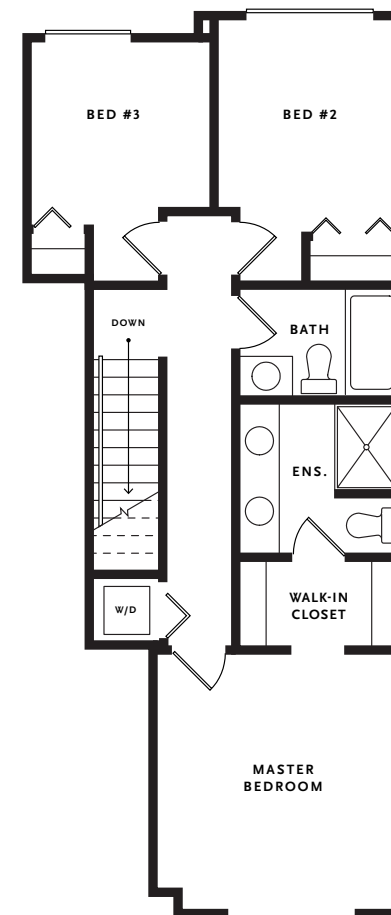
1,376 SF



BASEMENT



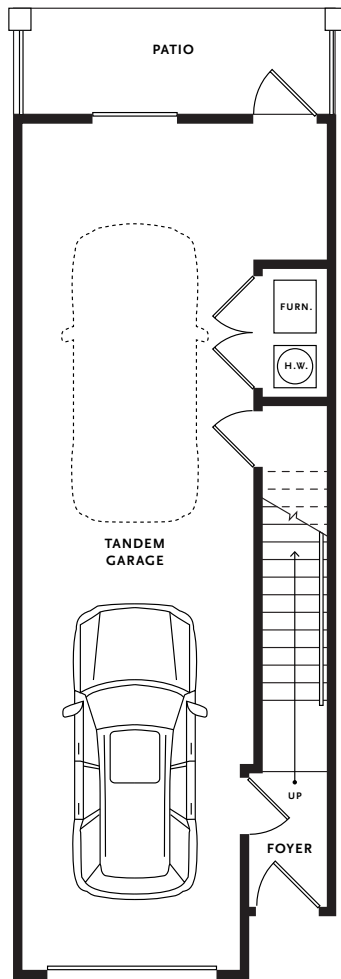
MAIN



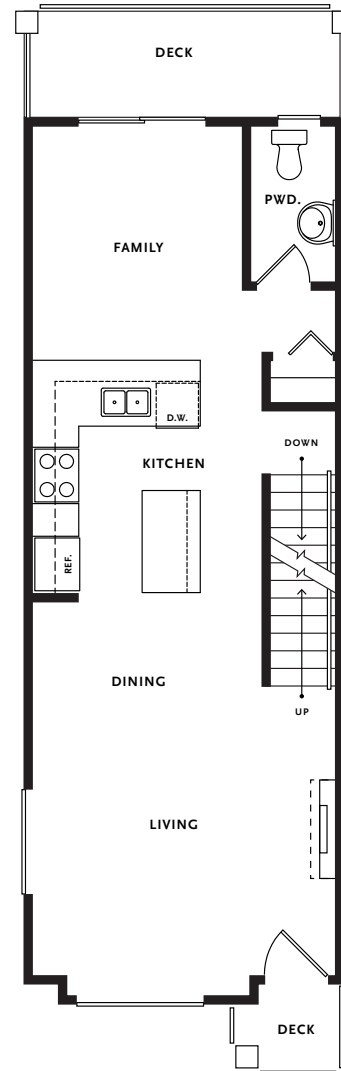
UPPER

C1 Three Bedroom

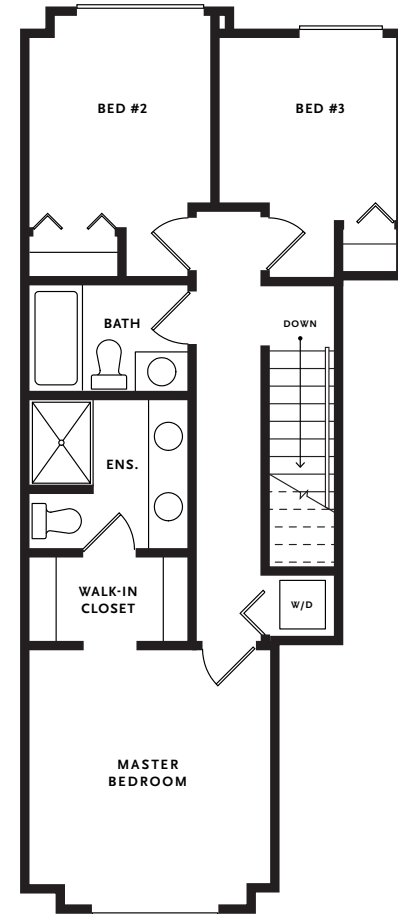
1,373 SF



BASEMENT



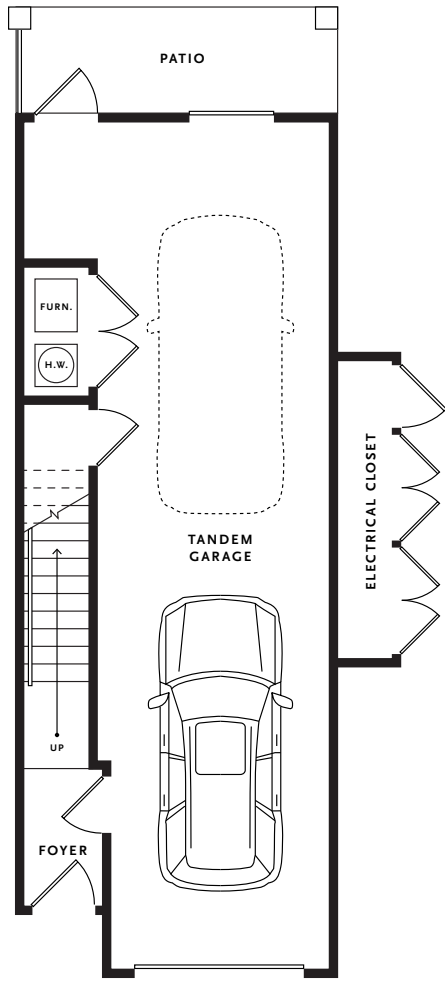
MAIN



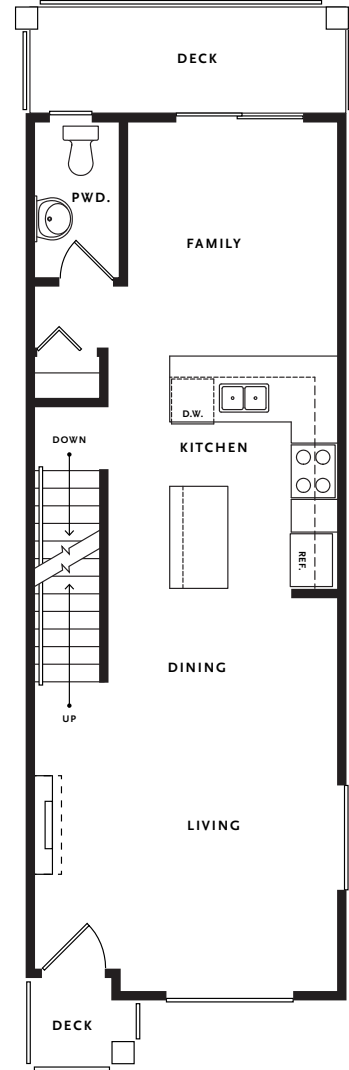
UPPER

C2 Three Bedroom

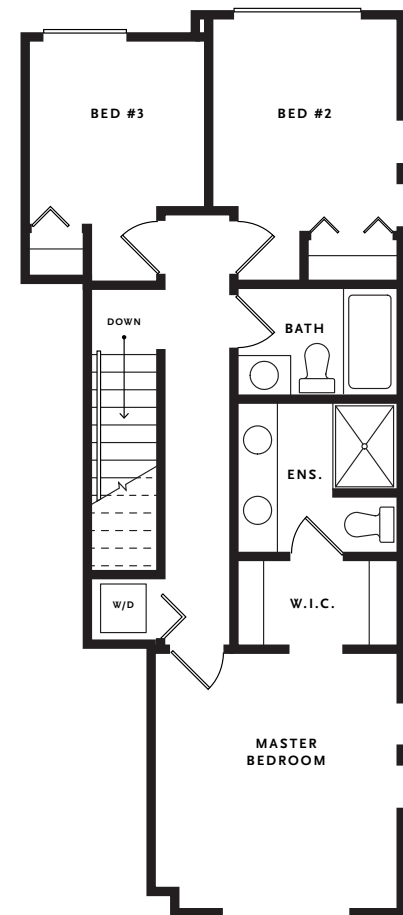
1,390 SF



BASEMENT



MAIN



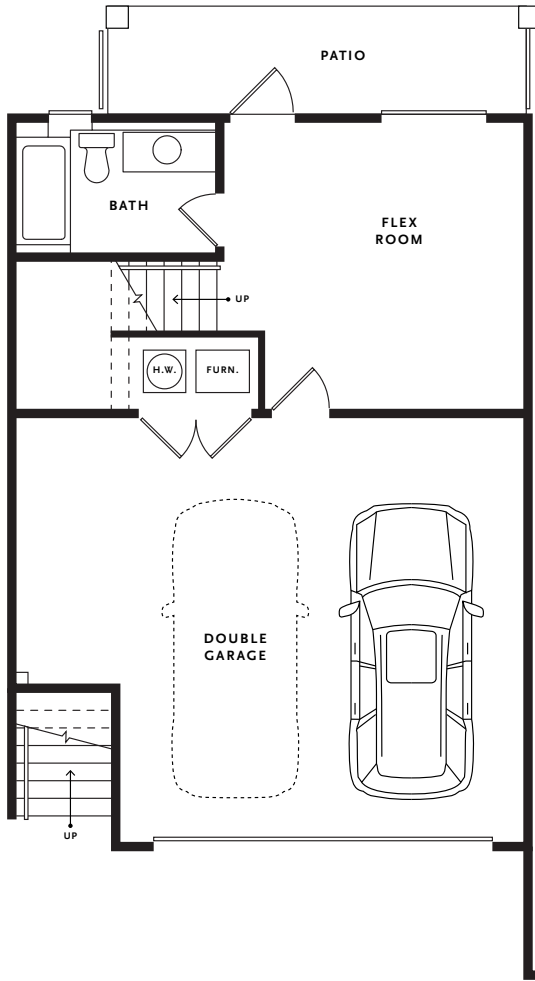
UPPER

D

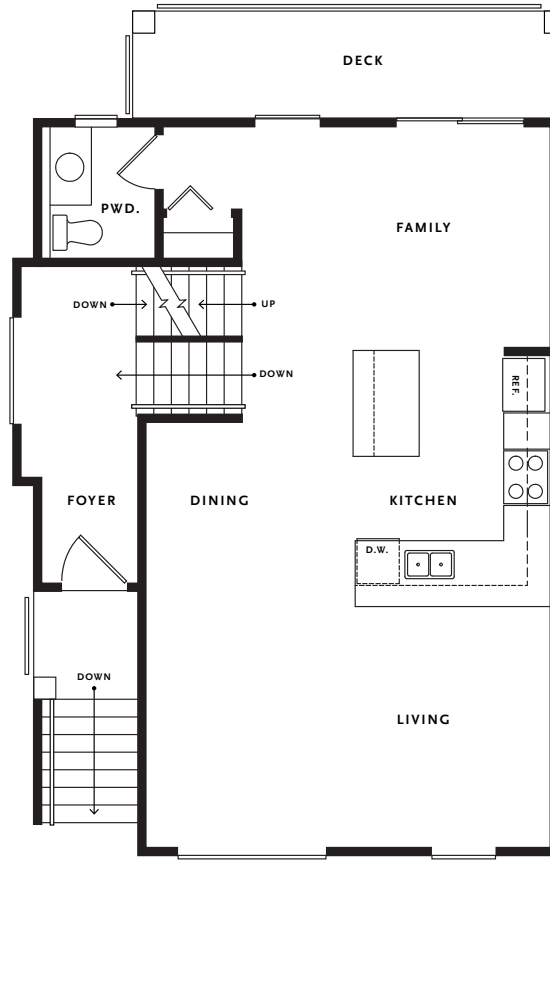
Three Bedroom + Flex 1,990 SF

SOUTH VILLAGE
MODERN FARMHOUSE REDEFINED

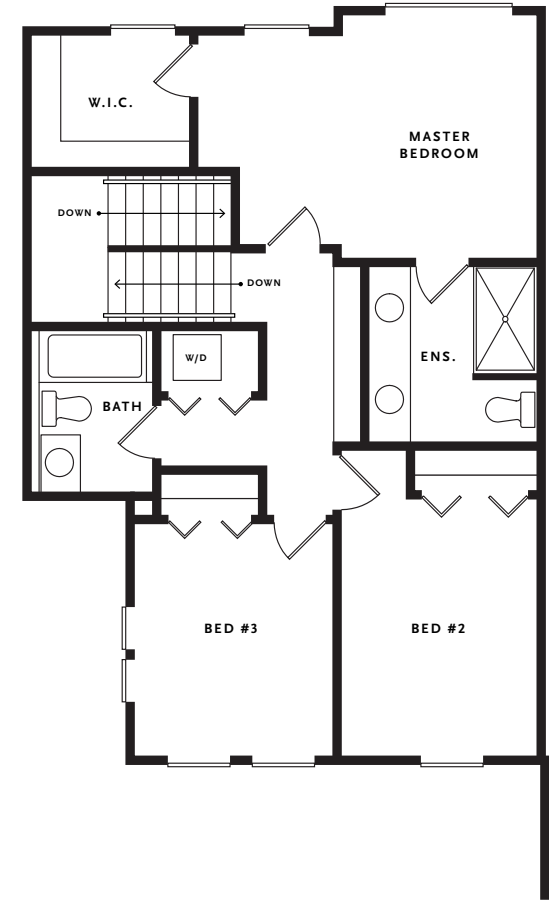
RED
KEY
MARKETING
FRONTLINE
REALTY



BASEMENT



MAIN



UPPER

info@liveatsouthvillage.com
liveatsouthvillage.com

604-910-9919
16467 23A Ave, Surrey, BC

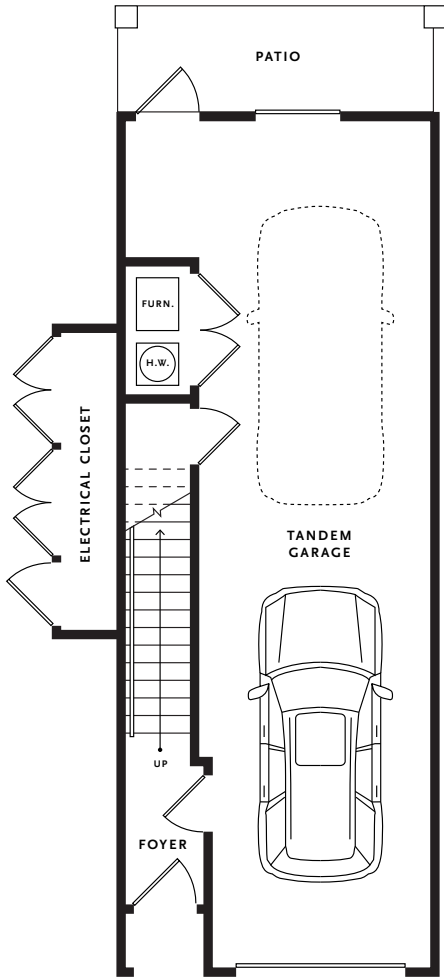
The developer reserves the right to make minor modifications or substitutions to building design, specifications or floor plans if necessary. All sizes and dimensions are approximate and based on architectural measurements. Reverse plans occur throughout the development. Renderings are an artist's conception and are intended for reference only. Deck and patio sizes may vary. Please refer to disclosure statement for specific offering details. E.&O.E.

E

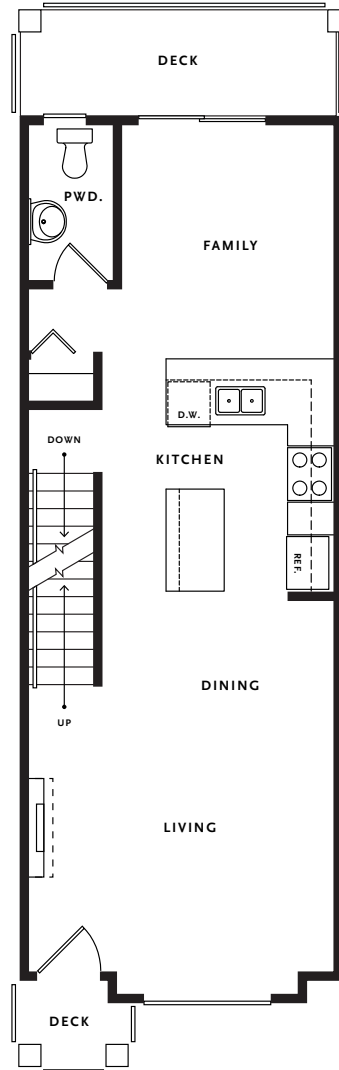
Two Bedroom 1,386 SF

SOUTH VILLAGE
MODERN FARMHOUSE REDEFINED

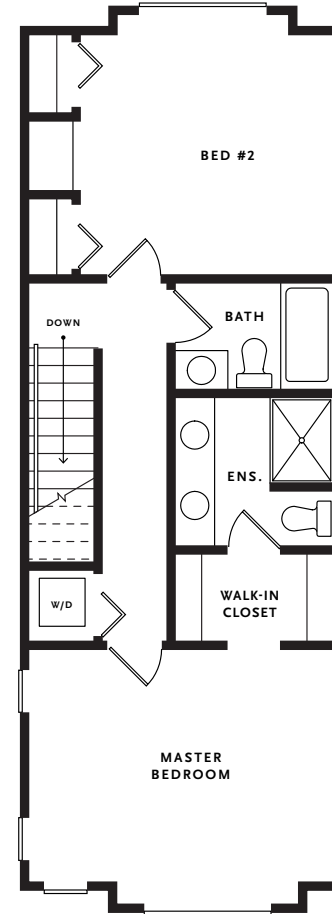
RED
KEY
MARKETING
FRONTLINE
REALTY



BASEMENT



MAIN



UPPER